



Internal Communication Software Solutions

Netpresenter Software Overview

Netpresenter main software

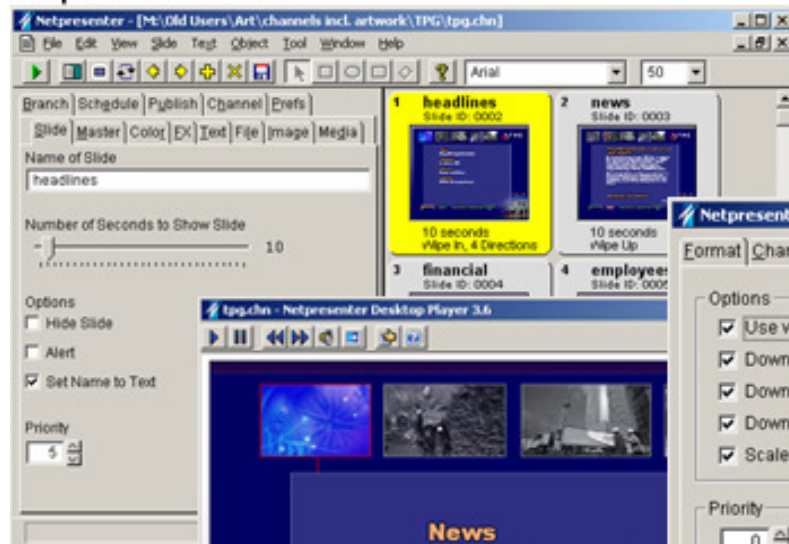
Introduction

Netpresenter is a software suite, which improves internal communication in your organization by allowing you to politely push and schedule personalized news as PowerPoint-like presentations to targeted user's PCs or TV screens, automatically disclosing corporate headlines, alerting users at an emergency, promoting new products, reducing email or bringing more visitors to an Intranet (if available).

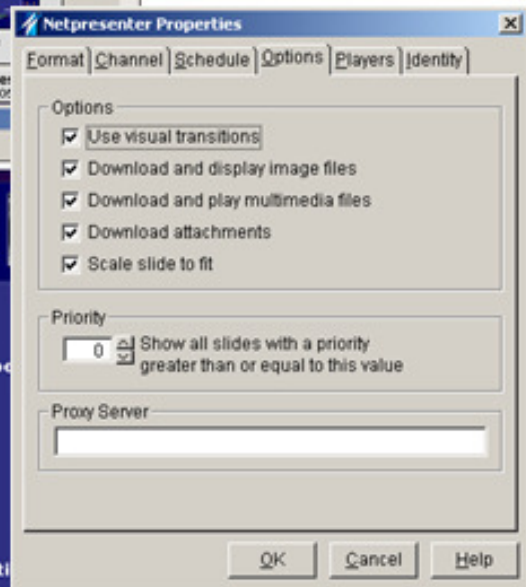
Netpresenter can either create content itself, or automatically import, update and display your Intranet headlines, effectively integrating with any existing content management software when available.

The Netpresenter software is Microsoft Windows based software and consists of the following creation and player modules:

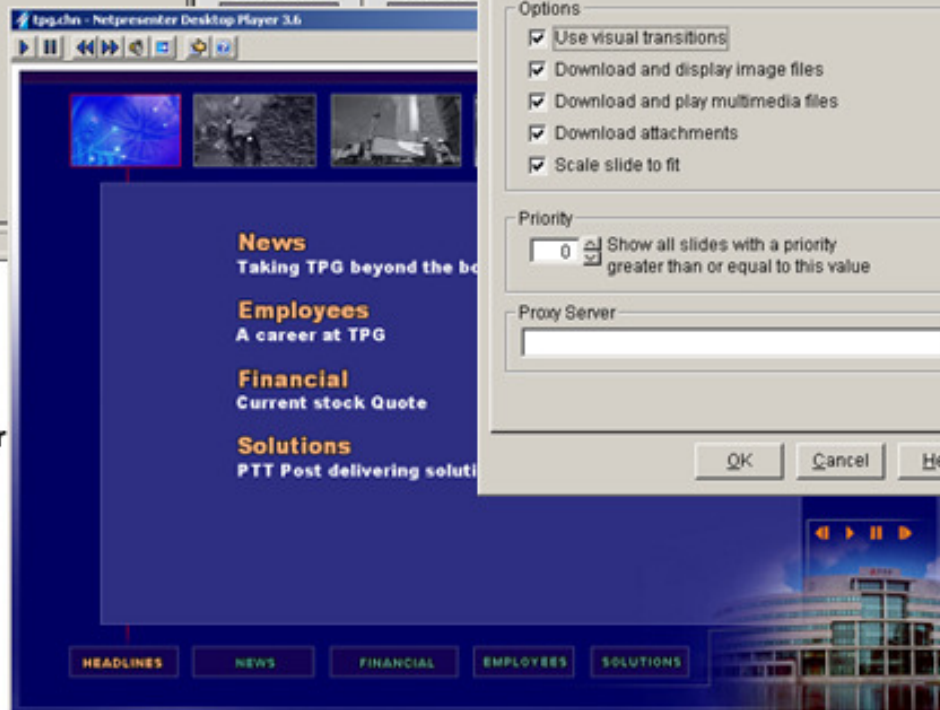
Netpresenter Editor:



Netpresenter Properties:



Netpresenter Player:



Content creation

- Netpresenter Editor: A PowerPoint-like program to create Netpresenter screensaver presentations with the smallest possible file sizes!

PC Players

Netpresenter Player: Desktop player to view Netpresenter presentations, with the ability to **popup** to display **emergency messages**.

- Netpresenter Screensaver: Screensaver module that play Netpresenter presentations as **interactive** Windows screensaver with hyperlinks.

TV/Plasma and Kiosk Players

- Netpresenter TV Player: Player module enables playback on TV and Plasma.
- Netpresenter Kiosk Player: For playback on interactive Kiosks.

- Netpresenter Properties: configures Netpresenter.

Netpresenter also has several optional modules that allow you to use your web browser to easily enter messages (Message Server) or automatically grab internet/intranet headlines (HTML2NETpresenter).

Thin client, low bandwidth so doesn't stress PCs nor your network

All Netpresenter Players are thin client programs of 400Kb which intelligently cache script-based Netpresenter presentations (channels), resulting in barely measurable network traffic (typically less than 50Kb per PC/day) .

Comfortably runs on every PC and Windows version

Netpresenter software runs on almost any PC, from a 386 to the latest Pentium, from Windows 95 to the newest XP and allows you to broadcast your message independent of the network technology used. Whether you're on a LAN/WAN/Intranet or on the Internet.

Does not require a dedicated server or server program

Netpresenter does not require a dedicated server, nor is any Netpresenter server software required in order to run. Netpresenter can store its presentations (called channels) on any existing file, FTP or http (web) servers.

Target groups and sites, personalize your message

Netpresenter's content personalization technology called Sub-channels, allows you to selectively target groups, language speakers, or sites and schedule information and even nest presentations, for example displaying both corporate and local site news at the same time.

Netpresenter Server Software (optional)

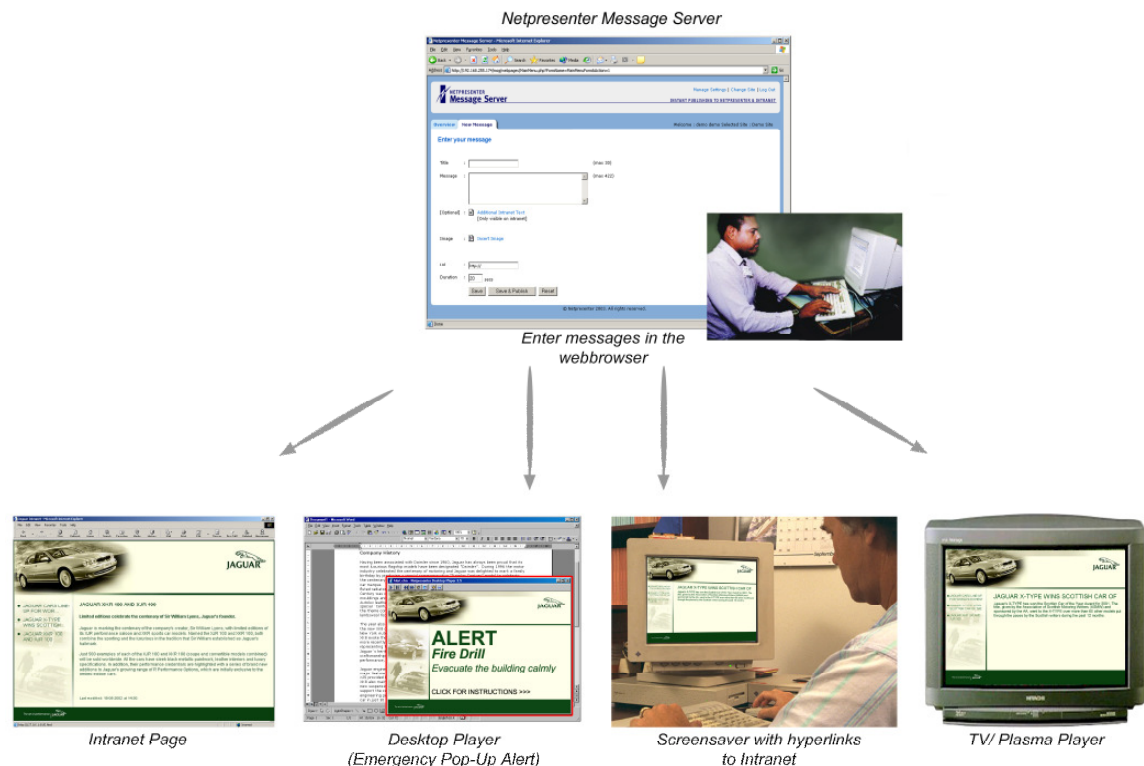
Additionally to the basic Netpresenter Editor software, different ways of creating Netpresenter presentations are possible. Netpresenter channels are described in a hypertext-like language, just like HTML and are as easy to generate. Easy integration and reuse of existing Intranet content management systems or databases translate into short implementation times.

Netpresenter Message Server

Allows messages to be entered via an easy web interface. Messages are stored (by default) in a MySQL database, but can optionally be stored into any database, for example Oracle or Microsoft SQL and Access. The channels generated by the message server can be fully customized.

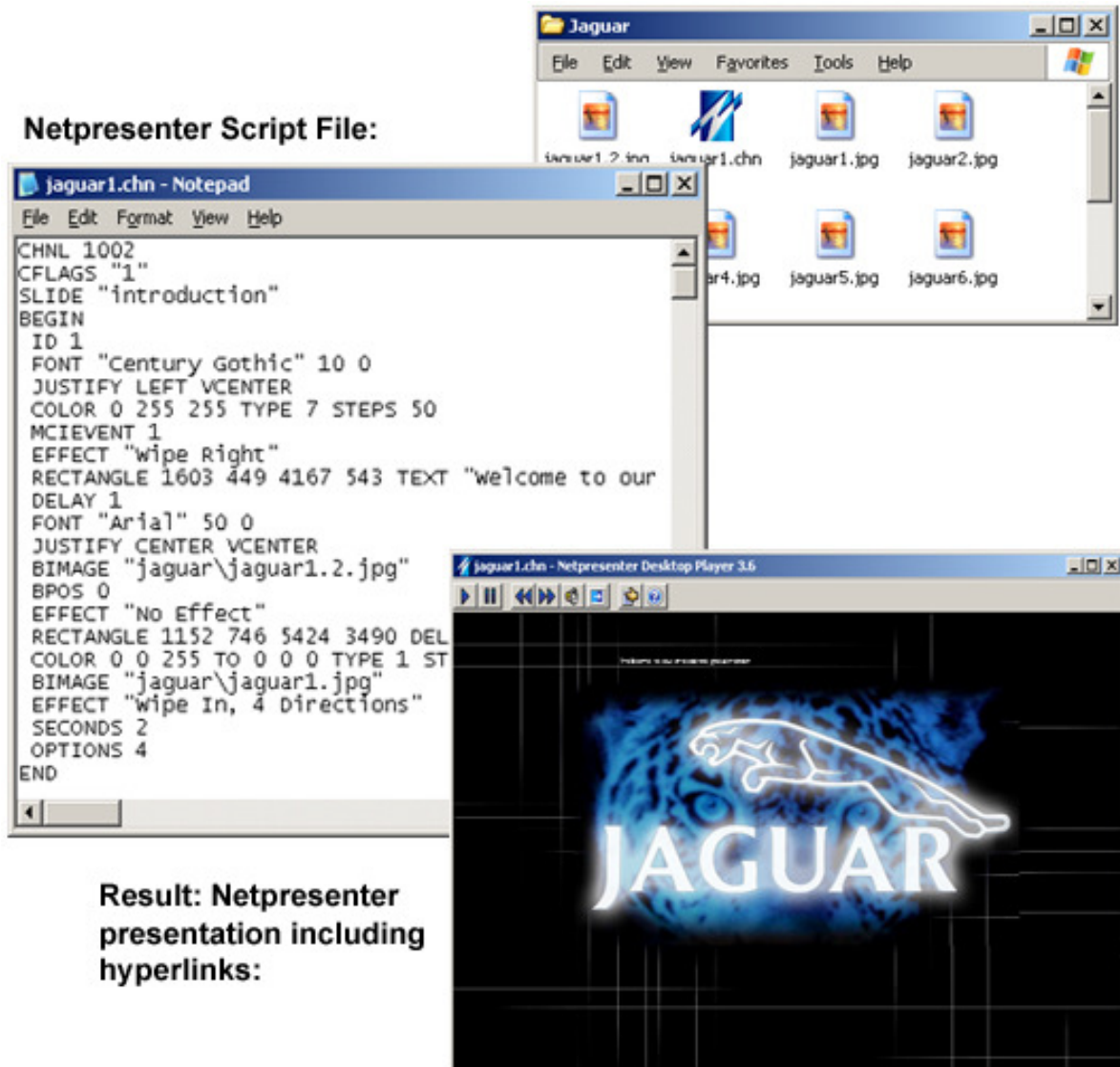
Messages entered into the Message server can be selectively displayed on both the Intranet and Netpresenter, preventing the same message from being entered twice. Messages can be targeted to different groups if required.

The Message server is written in PHP and requires a PHP compatible Internet server to run. Optional features allow easy browsing of an archive of messages entered.



Netpresenter presentation format

A Netpresenter presentation is structured much like a hypertext web page. The presentation consists of plain text script file and refers to images and media files which are used in the presentation. After creating or modifying a Netpresenter presentation in the Editor, you can publish the presentation to a shared network drive or to a location on the intranet so all players can see the updated information. The Editor will collect all related images and copy these with the generated script file (.chn) to the network. No Server applications are needed, a shared network space is all Netpresenter needs to operate.



Result: Netpresenter presentation including hyperlinks:

Netpresenter Installation

The Netpresenter Network Installer is an msi package (the newest Microsoft Windows installer technology), which automates installations on Client systems.

Roll out to large groups of client systems can be done using:

1. Using group policies;
2. Remote launch (Microsoft SMS or other remote management programs);
3. By starting an executable on the network (login-script or batch-file);
4. By manually branching to an executable from an email or hyperlink.

The complete Netpresenter package including the Netpresenter Editor uses approx. 1.6 MB of disk space. During installation the Netpresenter screensaver is copied into the windows directory and all other files are copied into the Netpresenter program directory (default is c:\program files\Netpresenter). The installer will set the registry to make Netpresenter the default screensaver and will add menu items to start the Netpresenter Player on startup. Netpresenter only uses default windows dll's; no additional dll's are copied. All Netpresenter configuration data is stored in the netpres.ini file, which is located in the Windows directory.

Low bandwidth, Thin Client and support for Citrix Servers.

A typical client installation (without the Editor) will require approximately 1 MB of disk space. This makes Netpresenter an ideal "Thin Client" solution. **Because of its unique design Netpresenter players will comfortably run on Citrix or Windows Based Terminal Servers.**

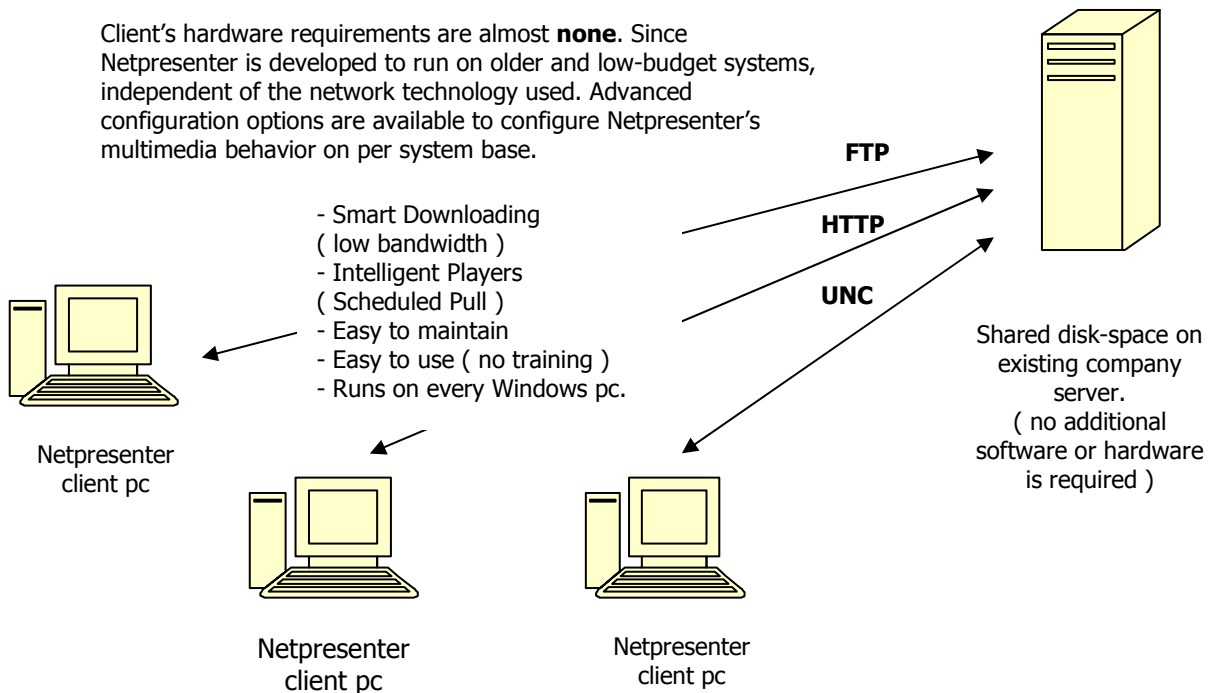
Netpresenter is developed to operate on heavy loaded business networks where bandwidth is very valuable and stressed out PCs.

The Netpresenter Player and Screensaver use a local directory to store information (typical c:\program files\Netpresenter\store). This self-cleaning cache directory is used to play information so no network connections are needed when the Player or Screensaver is running. Even if the server is offline (or not reachable e.g. notebook) the Player and Screensaver continue to play.

At a configured time interval the Player or the Screensaver will check the network to see if new information is available (scheduled pull). A time/date check of the local cached script file versus the network script file tells Netpresenter if new information is available. If new information is available only the changed information is downloaded.

A Netpresenter update is typically 20-30 KB because in most cases a channel primarily uses the same images (company style, logo) and only the text changes, together with one or two (gif or jpg) images. This update creates a network load that is equal to a "one-page" web view. If only text changes and no images are added or changed the update load is less than 10 KB, because only the script file needs to be downloaded.

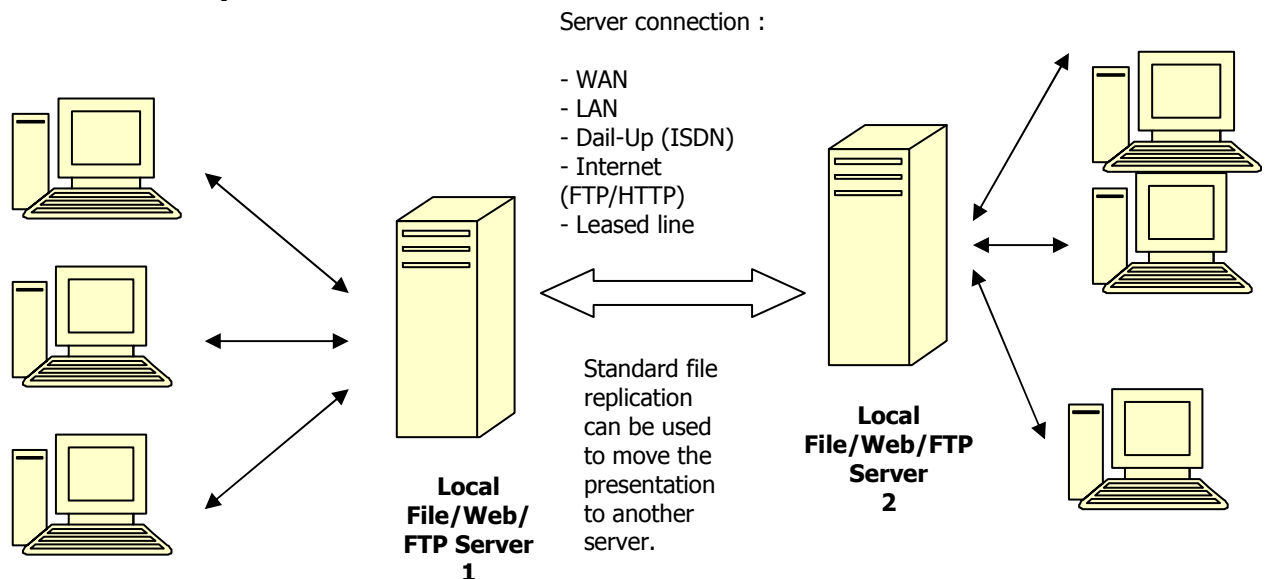
Client's hardware requirements are almost **none**. Since Netpresenter is developed to run on older and low-budget systems, independent of the network technology used. Advanced configuration options are available to configure Netpresenter's multimedia behavior on per system base.



Multiple-site implementation

A Netpresenter presentation typically consists of a script file (.chn) and the used image-and/or media-files. After publishing the presentation to a shared server space, all files needed by the presentation are stored in the same directory. If there are more servers, you can easily use standard file replication to get the presentation to another server.

Netpresenter presentations can be stored on existing fileservers without the need to buy new hardware.



Using existing local file/web/ftp servers and file replication

Typically, instead of file-replication, existing Intranet servers are used. The advantage is that no (delaying) file replication is required and Intranet servers are not restricted to NT domains and can be accessed throughout the company. Since Intranet servers are frequently already available, no additional hardware investments are necessary.

Since the Intranet servers allow for centralized maintenance, additional costs are saved.

Supported Hard- and Software

Netpresenter Players/ Editor run well on the following systems:

- Windows 95/98 SE/Me
- Windows NT 4.0 SP3 or later
- Windows 2000 SP1 or later
- Windows XP, all editions
- Windows Terminal Server Systems

Player PCs should have Internet Explorer 4.0 or later installed (Internet Explorer is usually installed as part of the standard Windows setup).

Hardware Requirements: 16Mb Ram, 2 Mb free HD space,

The installer is based on the Microsoft Windows Installer technology, the same technology that Microsoft uses for most of their software, including Office. The Microsoft Installer (MSI) file type is an open format that most system administrators are already familiar with. Automated software distribution, customization, repackaging etc. everything is possible with the Netpresenter installer file.

The Netpresenter installer by default does not attempt to upgrade system dll's.

Server Requirements

None (any FTP/HTTP or fileserver will do, even non-Windows servers such as Linux or Apple)

About Netpresenter

Netpresenter, founded in 1996, is the leading software developer of internal communication solutions with more than 1.000,000 installed desktops, Kiosks and TV screens at leading organizations and offices in New York, Maastricht (The Netherlands, Aachen (Germany) and London (UK).

Customers include Amsterdam Airport (Schiphol), Volkswagen, Ford, Pratt & Whitney, Philip Morris, Siemens, Swisscom, Sony, Barclays Bank, France Telecom, Shell, Philips, Unilever, Eastman, NATO, US Navy, Nokia, London Metropolitan Police and government agencies worldwide.

**For more information contact support@netpresenter.com
www.netpresenter.com or Tel. +31-464370886.**

Specifications of Netpresenter may change without prior notice.